

# MOSAİK

Tenor- und Sopranflöte, Piano  
und Streichquartett

Musik: David Plüss

System 1: Measures 1-5. The top staff (Tenor/Soprano flute) has a melodic line starting at measure 1, with a slur over measures 4 and 5. The piano accompaniment in the bottom two staves features a steady eighth-note pattern in the bass line.

System 2: Measures 6-9. The flute part continues with a slur over measures 7 and 8. The piano accompaniment maintains the eighth-note bass line.

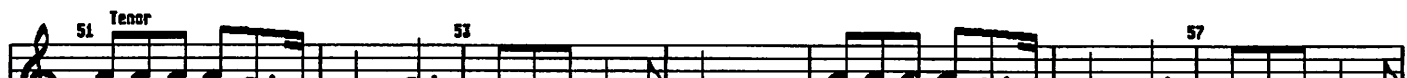
System 3: Measures 11-13. The flute part begins at measure 11 with a slur over measures 11 and 12. The piano accompaniment continues with the eighth-note bass line.

System 4: Measures 16-17. The flute part begins at measure 16. The piano accompaniment continues with the eighth-note bass line.

# MOSAİK

Tenor- und Sopranflöte

Musik: David Plüss



**MOSAİK**  
Streichquartett

Musik: David Plüss

Measures 1 to 17. The score is in 6/8 time. Measures 1-16 are mostly rests. Measure 17 contains a melodic phrase in the bass line: a dotted quarter note G#4, an eighth note A4, a dotted quarter note B4, an eighth note C5, a dotted quarter note D5, and an eighth note E5.

Measures 21 to 25. Measures 21-24 feature a rhythmic pattern of eighth notes in the upper staves, with rests in the lower staves. Measure 25 continues this pattern. The bass line has a melodic line in measures 23-24: a dotted quarter note G#4, an eighth note A4, a dotted quarter note B4, an eighth note C5, a dotted quarter note D5, and an eighth note E5.

Measures 28 to 33. Measures 28-33 feature a rhythmic pattern of eighth notes in the upper staves, with rests in the lower staves. The bass line has a melodic line in measures 28-29: a dotted quarter note G#4, an eighth note A4, a dotted quarter note B4, an eighth note C5, a dotted quarter note D5, and an eighth note E5.