

Zürcher Labyrinth

Musik: Hans-Jürgen Hufeisen 2016

... wild, kraftvoll und ausgelassen

VIVACE

Sopranflöte/Altflöte, Akkordeon, zwei Klaviere, Violoncello, zwei Toms

$\text{♩} = 80$
Sopran-, Altflöte im Wechsel

Akkordeon

Klavier 1

Klavier 2

Violoncello
mf

9 Sopranflöte
f

9 *f*

9 *f*

9 *f*

9

17

17

17

17

17

f etc.

24

24

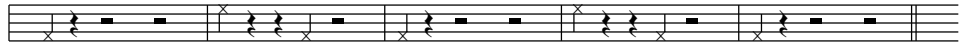
24

24

24

24

Tom 1 und 2



f

31

A system of piano accompaniment for measures 31-37. It includes a grand staff with treble and bass clefs. The right hand features a melodic line with eighth notes and rests, while the left hand provides a bass line with eighth notes and rests. The music is in a minor key and 4/4 time.

38

38 Altflöte

A system of music for measures 38-44. It includes an Alto flute part and a grand staff for piano accompaniment. The Alto flute part has a melodic line with eighth notes and rests. The piano accompaniment has a right hand with eighth notes and rests, and a left hand with eighth notes and rests. The music is in a minor key and 4/4 time.

etc